



MICROVISION

Flicware™ Cordless Software User's Guide for PC

Document: DA0110738 Rev A

Legal Notices

Copyright Notice

Software copyright © 2003 by Baracoda. All rights reserved.
license with Microvision, Inc.

Distributed under

The information in this document is subject to change without notice, and does not represent a commitment or warranty on the part of Microvision, Inc. No part of this manual may be reproduced by any means for any purpose without the express written permission of Microvision, Inc. The sole exception is that purchasers of the Flicware Cordless Software may print copies of this document for internal use only.

Trademarks

Microvision, Flic, and the Microvision logo are registered trademarks of Microvision, Inc.

Flicware is a trademark of Microvision, Inc.

Windows is a trademark of Microsoft Corporation.

The Bluetooth word mark and logos are owned by the Bluetooth SIG, Inc. Any use of such marks by Microvision, Inc. is under license.

Table of Contents

1	Introduction	4
1.1	Requirements	4
1.2	Supported Bluetooth Devices	4
1.3	Customer Support	4
2	Setting Up a Computer	5
2.1	Setting Up a Computer	5
2.1.1	Installing Flicware Cordless on the PC	5
2.1.2	Configuring Flicware Cordless to Connect to a Scanner on the PC	6
2.1.3	Exiting Flicware Cordless on the PC	8
3	Features of Flicware Cordless	9
3.1	Devices in Range	9
3.2	Configured Devices	10
3.3	Additional Buttons	11
4	Using Flicware Cordless	12
4.1	Adding and Pairing a Scanner	12
4.2	Clearing Pairing Information From the Scanner	12
4.3	Removing a Scanner	13
4.4	Disconnecting a Scanner	13
4.5	Automatically Connecting to a Configured Scanner	13
4.6	Setting the Options for a Scanner	13
4.6.1	Settings Options	14
4.7	Selecting the Destination of the Uploaded Bar Code Data	15
4.7.1	Changing the Prefix and Suffix Characters in KEmul	16
4.8	Scanning Bar Codes	16
4.8.1	Scanning Bar Codes Using the Terminal Plug-in	16
4.8.2	Scanning Bar Codes Using the KEmul Plug-in	17
4.8.3	Scanning Bar Codes Using the VCom Plug-in	17
5	Appendices	18

1 Introduction

The Flic® Cordless Scanner works with a Bluetooth enabled host device, and the Microvision Flicware Cordless software to provide wireless connectivity. The Flicware Cordless Software for PC helps you to easily perform the following tasks on your Bluetooth enabled Windows 2000 or Windows XP computer:

- Easily connect to the scanner the first time.
- Automatic reconnections if the connection is broken.
- Upload the bar codes from the scanner to the computer.
- Display a scanned bar code, or insert it in a field in your application.
- Set your Flic Cordless Scanner's parameters (PIN code...)

1.1 Requirements

- Flic Cordless Scanner
- Flicware Cordless Software for PC
- Bluetooth adapter. Microvision provides the following devices:
 - PC: USB base station
- PC:
 - Processor: Pentium II class PC, CPU 200 MHz or later
 - RAM: Minimum 128 MB
 - Operating system: Windows 2000 or Windows XP
 - Bluetooth stack/driver: Widcomm BTW 1.2.2.9 or later

1.2 Supported Bluetooth Devices

For the current list of supported Bluetooth host devices, visit www.flicscanner.com.

1.3 Customer Support

Website: www.flicscanner.com

Email: customer_service@microvision.com

Phone: Toll free within the United States: (866) 333-3542
International: (425) 354-3542

2 Setting Up a Computer

The Flicware Cordless software for PC runs a computer running Windows 2000 or Windows XP.

Note: You must have administrator rights to your computer.

2.1 Setting Up a Computer

You need to perform the tasks listed below to set up your computer, and Flic Cordless Scanner to decode bar codes:


1. Install the Bluetooth driver and adapter, if you do not have one installed. For more information, see the instructions that came with your Bluetooth adapter.
2. Install the Flicware Cordless software. For instructions, see "2.1.1 Installing Flicware Cordless on the PC" below.
3. Configure Flicware Cordless to connect to your Flic scanner. For instructions, see "2.1.2 Configuring Flicware Cordless to Connect to a Scanner on the PC" on page 6.
4. Select the plug-in that will receive the output from the scanner. For more information, see "4.7 Selecting the Destination of the Uploaded Bar Code Data" on page 15.
5. Exit the program at the end of your session to save your changes.

2.1.1 Installing Flicware Cordless on the PC

You must install the Bluetooth driver and adapter before you install Flicware Cordless.

1. Download the software from www.flicscanner.com.
2. In Windows Explorer, double click the FC_PC_VX.XX.exe file that you downloaded.
3. Select a language from the drop-down menu on the Installer Language dialog box.
4. Click OK.
5. Click Next on the "Welcome to Flicware Cordless Setup Wizard" window.
6. Click I Agree on the "License Agreement" window. The terms of the license agreement are reprinted in the Appendices at the end of this guide.
7. Look to see that the Flicware Cordless, the Start Menu Shortcuts, and Virtual COM port drivers are checked on the "Choose Components" window.
8. Click Next.
9. If you want to install the program in a different location, click the Browse button, and navigate to the new location. Click OK.
10. Click Install.
11. Click Finish on the "Completing the Flicware Cordless Setup Wizard" window.

2.1.2 Configuring Flicware Cordless to Connect to a Scanner on the PC

1. Start the application by selecting **Start > Programs > Flicware Cordless > Flicware Cordless**. The Flicware Cordless window displays and the  Flicware Cordless icon is added to the lower right corner of the task bar. The icon has a dark background because Flicware Cordless is not connected to a scanner. When Flicware Cordless connects with a scanner, the icon has a light background.

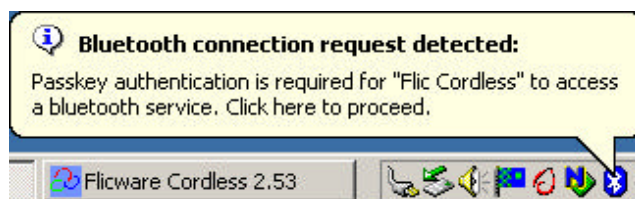


Flicware Cordless displays a rotating flashlight while it searches for discoverable scanners. Turn on the scanner by pressing the button. The green LED should blink twice every two seconds indicating the scanner is in the discoverable mode. When it detects a scanner, it adds its name to the Devices In Range section.

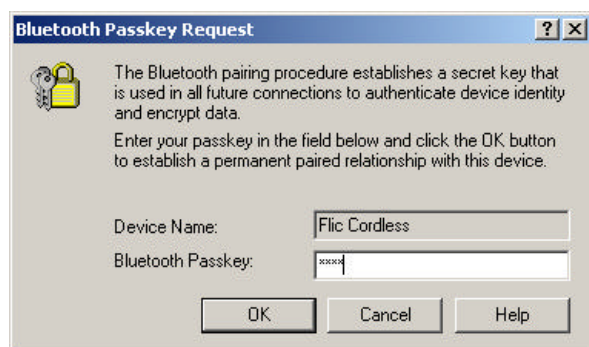
2. Click the name of the scanner, and click **Add**. Flicware Cordless will display the scanner in the My Paired Devices box. Notice that the status is "Connecting".



- The Bluetooth Connection asks for Passkey authentication.



While the message displays, click the  Bluetooth Connection icon. The Bluetooth Passkey Request window appears.



- Type the PIN code in the Bluetooth Passkey: field. The default value is 0000, four zeros.
- Click OK. The Terminal Window opens.
- Look at the status of the scanner in Flicware Cordless. When the status changes to "Connected," the scanner is ready to use.
- Test the scanner's connection by scanning a bar code. The bar code data should appear in the Terminal window.

Flicware Cordless uses plug-ins to determine where to send the decoded bar codes uploaded by the scanner. If you need to change the plug-in that the scanner is currently using, follow the directions in "4.7 Selecting the Destination of the Uploaded Bar Code Data" on page 15.

2.1.3 Exiting Flicware Cordless on the PC

The first time you use Flicware Cordless, you should quit by clicking Exit. This lets Flicware Cordless save information about the scanner and your preferences. Any time that you change the configuration, you should exit the application to save your changes. When you do not make changes, you can leave the program running when you shut down the PC.


3 Features of Flicware Cordless

Flicware Cordless Running on a Computer



The Flicware Cordless window is divided into two main sections, the discoverable scanners (Devices in Range), and the scanner(s) that have been configured (My Paired Devices).

- The Devices in Range section displays in the top part of the window. It shows the discoverable scanners that are within the reception range of the Bluetooth host device. For more information, see “3.1 Devices in Range,” below.
- The configured devices region is the lower half of the window, and it is called My Paired Devices. This region shows the configured scanner(s) and the connection status. For more information, see “3.2 Configured Devices” on page 10.

When Flicware Cordless is active, the  Flicware Cordless icon is added to the task bar. This icon displays with a darker background when you do not have an active connection to a cordless scanner. It changes to a lighter background when Flicware Cordless connects to a scanner.

3.1 Devices in Range

The Devices in Range section has the following features:

- Box that lists name and the Bluetooth device address (BdAddr) of the discoverable scanners that Flicware Cordless has found.
- Search/Stop button that tells Flicware Cordless to look for all discoverable scanners in the Bluetooth radio signal range. For more information, see “4.1 Adding and Pairing a Scanner” on page 12.
- Add button that copies the selected scanner to the My Paired Devices box so that you can use it. For more information, see “4.1 Adding and Pairing a Scanner” on page 12.

- Remove button that deletes the selected scanner from the My Paired Devices list. For more information, see "4.3 Removing a Scanner " on page 13.



3.2 Configured Devices

Flicware Cordless for PC allows connection with one scanner.

The configured devices section is named "My Paired Devices" on the PC. It has the following fields:

- **Auto Connect.** Check this box when you want to automatically reconnect the scanner after you restart the application, the scanner has gone out of range, or when the scanner has fallen asleep. This is enabled by default. For more information, see "4.5 Automatically Connecting to a Configured Scanner" on page 13.
- **ID.** This is a number for the scanner that is assigned by Flicware Cordless.
- **Name.** This displays the name of the scanner.
- **BdAddr.** This shows the Bluetooth device address.
- **Status.** The shows the status of the scanner's connection.
 - **Connecting.** Flicware Cordless is trying to connect to the scanner.
 - **Connected.** The scanner is active, and ready to decode bar codes.
 - **Disconnected.** The scanner is out of range, has been manually disconnected, or is asleep.
- **Plugin.** This is used to specify where to output the bar code data uploaded by the scanner. For more information, see "4.7 Selecting the Destination of the Uploaded Bar Code Data" on page 15.
- **Connect/Disconnect.** The name of this button changes depending on the status of the selected scanner. Use this button to connect a scanner that is disconnected, or to disconnect a scanner that is connected.
- **Settings.** This opens the Settings Window for the selected scanner. For more information, see "4.6 Setting the Options for a Scanner" on page 13.

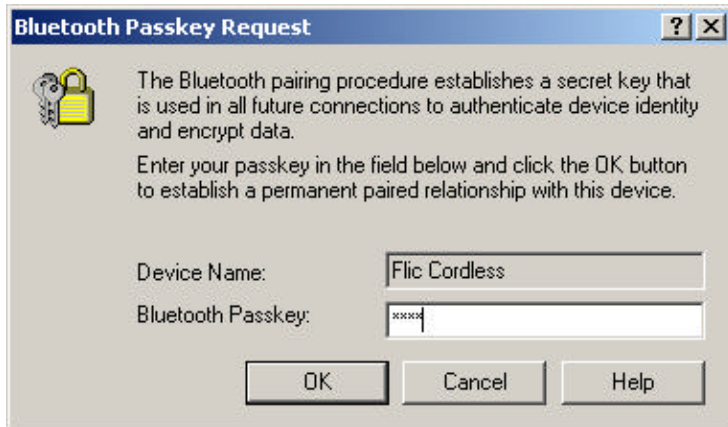
3.3 Additional Buttons

- **Hide.** Clicking this button minimizes the Flicware Cordless window. When you minimize the window, it collapses into the  tray icon in the task bar, instead of displaying a task bar button with the program's name. To redisplay the application window, double-click the  icon.
- **Exit.** Clicking this button quits Flicware Cordless and saves the configuration information. When you exit the application, the scanner switches to standby mode.


4 Using Flicware Cordless

4.1 Adding and Pairing a Scanner

Entering the Passkey on a Computer



In order to use the scanner, you must pair it with the Bluetooth host device. The pairing information is stored in the Bluetooth host device, and in the scanner. To pair the scanner and the host device:

1. Launch Flicware Cordless.
2. Press the button on the scanner to place it in discoverable mode.
3. Click Search in Flicware Cordless to find all discoverable scanners. If Flicware Cordless does not find your scanner, press the scanner's button again, and click Search a second time to restart the search.
4. Highlight the desired scanner in the Devices in Range box, and click Add to copy it to the My Paired Devices section. Flicware Cordless tries to connect with the scanner, and the status of the scanner is "Connecting."
5. After Flicware Cordless connects to the scanner, the Bluetooth Connection will ask for the PIN Code.
 1. On the PC, click the  Bluetooth Connection icon while the "Bluetooth connection request detected:" message displays. The Bluetooth Passkey Request dialog box opens.
 2. Enter the PIN code in the Bluetooth Passkey: field. The default value is 0000, four zeros.
 3. Click OK.
6. Look at the status of the scanner in Flicware Cordless. When the status changes to Connected, the scanner is ready to use.

4.2 Clearing Pairing Information From the Scanner

- To clear the embedded pairing information, press the scanner's button for 10 seconds. The scanner will beep three times.

4.3 Removing a Scanner

1. Highlight the scanner that you want to remove in the My Paired Devices section.
2. Click Remove. Flicware Cordless deletes the scanner from the My Paired Devices list.

4.4 Disconnecting a Scanner

1. Highlight the scanner that you want to disconnect in the My Paired Devices section.
2. Click Disconnect. Flicware Cordless closes the Bluetooth radio connection between the application and the scanner.

4.5 Automatically Connecting to a Configured Scanner

By default, scanners in Flicware Cordless are configured to automatically reconnect after the Bluetooth connection is broken. The Bluetooth connection can be broken when the scanner moves out of range of the radio signal, the scanner goes to sleep, the scanner loses power, you remove the battery door, the PC goes into standby mode, when the PC is turned off, or when you click the **Disconnect** button.

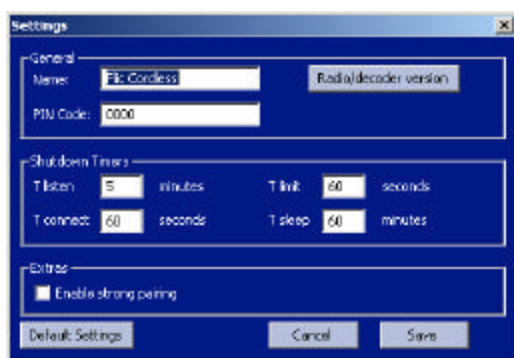
When the Bluetooth connection is broken, the scanner saves the newly scanned bar codes in memory. When you have enabled Auto Connect, and the Bluetooth connection is reestablished, the Flicware Cordless will automatically reconnect and upload all the saved bar codes.

If your scanner configuration does not have automatic reconnections enabled, follow these steps:

1. Click to insert a check mark in the **Auto Connect** check box.
2. At the end of your session, click Exit to quit Flicware Cordless and save your changes.

4.6 Setting the Options for a Scanner

Settings Window on a Computer



1. Press the button on the scanner whose options you want to set to make sure that it is awake.
2. Highlight the scanner in the My Paired Devices section.
3. Click Settings. The Settings window appears.
4. Make your changes. To restore the factory default settings, click **Default Settings**. For more information, see the "4.6.1 Settings Options" below.

Note: When you increase the amount of time that the scanner is active, you decrease the scanner's battery life.

5. Click **Save** on the Settings window.

If you want to exit without saving your changes, click **Cancel**.

4.6.1 Settings Options

The setting options have the following fields:

- **Name.** This is the name of the scanner. You can use this to personalize a scanner. This name displays when you search for scanners. The default name for all scanners is Flic Cordless.
- **PIN Code.** This is also called the Bluetooth passkey. This is used to authenticate the scanner. The default PIN code is 0000, four zeros.
- **Radio/decoder version.** This opens a message box that displays:
 - **Radio.** The version of Bluetooth firmware.
 - **Decoder.** The version of embedded decoder software.

Click **OK** to close the message box.

- **Shutdown Timers.** This tells the scanner how long to:
 - **Listen.** This is the amount of time in minutes that the scanner stays discoverable when it is not paired. The default value is 5 minutes.
 - **Connect.** This is the amount of time in seconds that the scanner remains connected without pressing the button. The default value is 60 seconds.
 - **Limit.** This is the amount of time in seconds that the scanner stays discoverable after a involuntary disconnection when it is paired. The default value is 60 seconds.
 - **Sleep.** This is the interval in minutes that the Flic Cordless will attempt to transmit stored bar codes. The default value is 60 minutes. With this value, when the scanner has bar codes in memory and it is disconnected, the scanner wakes up once an hour and attempts to reconnect.

Note: When you increase the amount of time that the scanner is active, you decrease the scanner's battery life.

- **Enable strong pairing.** This uses the Bluetooth device address (BdAddr) and the PIN code to pair the scanner. This to ensure a unique pairing, and it prevents a second Bluetooth host from connecting to the scanner, even when the second host knows the scanner's PIN code.

The settings options provide the following buttons:

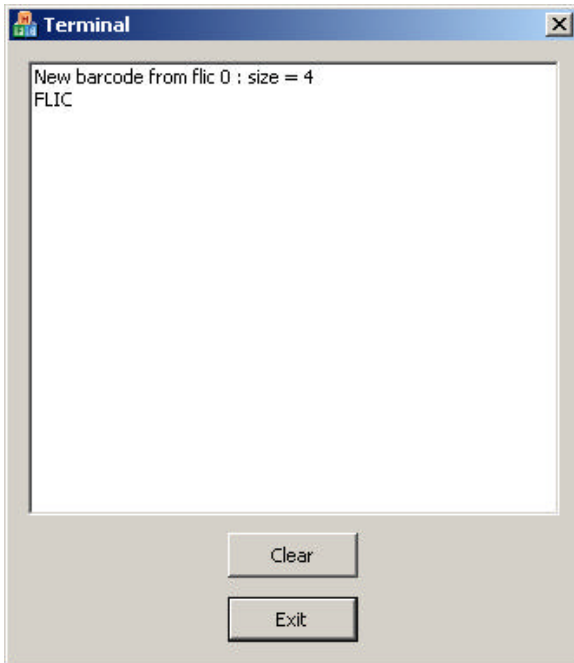
- **Default Settings.** Click this to restore the scanner to the factory default settings.
- **Cancel.** Click this to close the window, without saving any changes.
- **Save.** Click this to record the new settings, and send the new parameters to the scanner.


4.7 Selecting the Destination of the Uploaded Bar Code Data

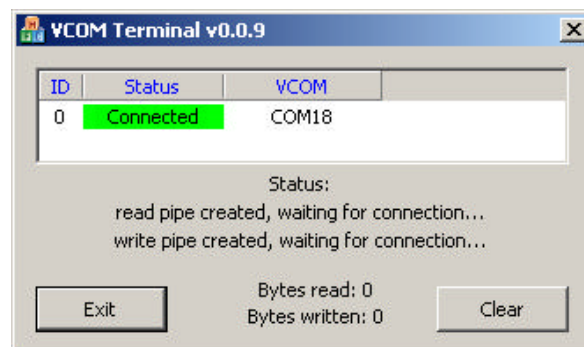
Flicware Cordless uses plug-ins to determine where to send the decoded bar codes uploaded by the scanner. You can use one of the following plugins:

- **Terminal.** Use the Terminal to display the scanned bar codes in real time. You can use the Terminal to check the types and values of scanned bar codes, or to verify that your scanner is working correctly. When you select Terminal, Flicware Cordless opens a Terminal window.


Terminal Window on the PC



- **KEmul.** KEmul is a keyboard emulator. Select KEmul when you want to quickly and easily integrate the scanner with multiple applications, such as Word, Excel, an HTML form, a database, or a custom application. With KEmul, you can input the bar codes read by the scanner into the selected field of your application. When you select KEmul, Flicware Cordless adds the  KEmul icon to the right side of the task bar.
- **VCom.** VCom provides a virtual COM port. You can use this to communicate with an application. When you select VCom, Flicware Cordless opens the VCOM Terminal window, which displays the status of the connection, and the number of the virtual com port that it created.




To select a plug-in:

1. Launch Flicware Cordless by selecting **Start > Programs > Flicware Cordless > Flicware Cordless**.
2. Press the button on the scanner to place it in discoverable mode.
3. Click the name of the scanner in **My Paired Devices**, and then select the appropriate plug-in from the drop down menu in the **Plugin** column. When you have selected:
 - Terminal plug-in, the Terminal window opens.
 - KEEmul plug-in, the  KEEmul icon is added to the right side of the taskbar.
 - VCom plug-in, the VCOM Terminal window opens.

4.7.1 Changing the Prefix and Suffix Characters in KEEmul

You can have KEEmul add a keystroke before and after the scanned bar code. These can be used to navigate an application window, or to add a particular character to each bar code. For example you can set the suffix character to a Space to separate bar codes in a Word document. Or, you can set the prefix character to Tab, and the suffix character to Return, to tab to the second field in a database, input the bar code, and then submit the information.

To set the KEEmul options:

1. Click the down arrow, and select the KEEmul plugin for the scanner from the drop-down menu in the **My Paired Devices** section. The  KEEmul icon is added to the right side of the taskbar.
2. Open the KEEmul configuration window by clicking the KEEmul icon with the right-mouse button. Select **Configuration**.
3. To set the Prefix character:
 - a. Click **New** in the Prefix section of the Configuration window.
 - b. Press the appropriate key on your keyboard. Note that the **Enable** box is checked.
4. To set the Suffix character:
 - a. Click **New** in the Suffix section of the Configuration window.
 - b. Press the appropriate key on your keyboard. Note that the **Enable** box is checked.
5. Click **OK**.

To close the window without saving any changes, click **Cancel**.

4.8 Scanning Bar Codes


When you take the scanner out of range of the Bluetooth radio, the connection is broken. When the scanner is not connected, it will save the decoded bar codes in memory. When you come back into the Bluetooth radio range and the application is set to **Auto Connect**, Flicware Cordless will automatically reconnect with the scanner and the scanner will upload all the saved bar codes.

4.8.1 Scanning Bar Codes Using the Terminal Plug-in

1. Launch Flicware Cordless.

2. Check that you have the Terminal plug-in selected for the scanner in My Paired Devices.
3. Press the button on the scanner to wake the scanner up.
4. Wait until the Flicware Cordless connects to the scanner. The Terminal window will open.
5. Scan the bar code with your scanner. The bar code data should appear in the Terminal window.

4.8.2 Scanning Bar Codes Using the KEmul Plug-in

1. Launch Flicware Cordless.
2. Check that you have the KEmul plug-in selected for the scanner in My Paired Devices.
3. Press the button on the scanner to wake the scanner up.
4. Wait until the Flicware Cordless connects to the scanner. The  KEmul icon appears.
5. Open the application that will receive the bar code data. This can be a word processing application, a spreadsheet, a database, or any other application.
6. Place the cursor where you want the bar code data to appear.
7. Scan the bar code with your scanner. The bar code data should appear in the destination application. If the data does not appear, check that the destination application is active, and in the front.

4.8.3 Scanning Bar Codes Using the VCom Plug-in

1. Launch Flicware Cordless.
2. Check that you have the VCom plug-in selected for the scanner in My Paired Devices.
3. Press the button on the scanner to wake the scanner up.
4. Wait until the Flicware Cordless connects to the scanner. The VCOM Terminal window opens, and the scanner's status is shown as **Connected** in the VCOM Terminal window.
5. Open the communications program that will receive the bar code data.
6. Scan the bar code with your scanner. The bar code data should appear in the communications program.

5 Appendices

END USER SOFTWARE LICENSE AGREEMENT

FOR SOFTWARE TO BE USED WITH FLIC SCANNER PRODUCTS

IMPORTANT NOTICE TO END USERS: This End User License Agreement (the "Agreement") is a legal agreement between the purchaser of the Licensed Software being made available for use with Microvision Flic™ bar code scanner products (either an individual person or a single legal entity, who will be referred to in this Agreement as "You") and Microvision, Inc.

BY DOWNLOADING, INSTALLING, COPYING OR OTHERWISE USING THE LICENSED SOFTWARE (AS DEFINED BELOW), YOU AGREE TO BE BOUND BY THE TERMS OF THIS AGREEMENT. IF YOU DO NOT AGREE TO THE TERMS OF THIS AGREEMENT, DO NOT DOWNLOAD, INSTALL, COPY OR USE THE LICENSED SOFTWARE. IF YOU ACQUIRED THE LICENSED SOFTWARE ON TANGIBLE MEDIA (e.g. CD) WITHOUT AN OPPORTUNITY TO REVIEW THIS LICENSE AND YOU DO NOT ACCEPT THIS AGREEMENT, YOU MAY OBTAIN A REFUND OF ANY AMOUNT YOU ORIGINALLY PAID IF YOU (A) DO NOT USE THE LICENSED SOFTWARE AND (B) RETURN IT, WITH PROOF OF PAYMENT, TO THE LOCATION FROM WHICH IT WAS OBTAINED WITHIN THIRTY (30) DAYS OF THE PURCHASE DATE.

This Agreement is effective on the date on which You manifest Your acceptance of this Agreement by downloading, installing, copying or otherwise using the Licensed Software.

IMPORTANT NOTICE TO RESELLERS AND DISTRIBUTORS: If you are an authorized reseller or distributor of Microvision Flic™ bar code scanner products, you may download the Licensed Software for distribution or resale to end user customers, provided that doing so is consistent with the terms of your existing distribution or reseller agreement with Microvision. Except as provided in the following sentence, your acceptance of the terms of this Agreement will not supercede, modify or amend the terms and conditions of your existing reseller or distributor agreement with Microvision. *However, by downloading the Licensed Software and manifesting your acceptance of this Agreement, you agree that (i) you will only distribute the Licensed Software pursuant to this End User License Agreement between Microvision and the end user; (ii) you will provide each of your end user customers with a copy of this End User License Agreement and ensure that such end users are on notice that their use of the Licensed Software is contingent upon their acceptance of the terms and conditions of this End User License Agreement, and (iii) you will refund the purchase price of the Licensed Software to any end user customer who does not accept the terms and conditions of this End User License Agreement and returns the Licensed Software unused within thirty (30) days of their purchase date.*

DEFINITIONS. In this Agreement, "Licensed Software" means the computer programs, in machine-readable, interpreted, compiled or other form, furnished to You for use with Flic™ Scanner(s), whether owned or licensed by Microvision, and including without limitation, (i) computer programs residing on any medium and all materials or contained in any download supplied by Microvision in connection with the Licensed Software, (ii) related explanatory written materials or files ("Documentation"); and (b) upgrades, modified versions, updates, additions, and copies of the Licensed Software, if any, provided to You by Microvision, either directly or indirectly (collectively, "Updates"). The "Flic™ Scanner(s)" means the Microvision Flic bar code scanner products that Microvision sold to You, either directly or indirectly. "Microvision" means Microvision, Inc., 19910 North Creek Parkway, Bothell, WA 98011-3008.

LICENSE. As long as You comply with the terms of this Agreement, Microvision grants You a personal, non-exclusive, non-transferable license to use the Licensed Software (in object code form only) for Your own use in the operation of the Flic™ Scanner(s). The license granted hereunder is perpetual.

SOFTWARE TITLE. Microvision is not selling You the Licensed Software. Title to the Licensed Software, including all translations, compilations, derivative works and copies remain with Microvision or its licensors, as the case may be.

SUPPORT SERVICES. Microvision or the reseller or distributor from whom You purchased Your Flic™ Scanner(s) may provide You with support services related to the Licensed Software ("Support Services"). Use of Support Services is governed by the policies and programs described in the user manual, in "online" documentation, or in other materials from the support services provider. Any supplemental software code provided to You as part of the Support Services are considered part of the Licensed Software and subject to the terms and conditions of this Agreement. You acknowledge and agree that Microvision and its licensors, contractors, resellers and distributors may use technical information You provide to them as part of the Support Services for its business purposes, including for product support and development.

RESTRICTIONS.

You will not use the Licensed Software in conjunction with any other equipment, system, processing units, or for any purpose other than for the operation of the Flic™ Scanner(s) and solely for Your internal business in accordance with operating instructions Microvision or its authorized resellers or distributors may provide from time to time.

Unless specifically and expressly permitted by Microvision, You agree not to modify, adapt or translate the Licensed Software. You also agree not to reverse engineer, decompile, disassemble or otherwise attempt to discover the source code of the Licensed Software. You also agree not to rent, lease, transfer, or otherwise transfer rights to the Licensed Software. Any such forbidden use will immediately terminate Your license to the Licensed Software.

INTELLECTUAL PROPERTY AND CONFIDENTIALITY.

The Licensed Software and any copies that You are authorized by Microvision to make are the intellectual property of and are owned by Microvision, Inc. and its licensors. The Licensed Software is protected by copyright, including without limitation by United States Copyright Law, international treaty provisions and applicable laws in the country in which it is being used. You may not copy the Licensed Software, except as set forth in Section 2 (License). Any copies that You are permitted to make pursuant to this Agreement must contain the same copyright and other proprietary notices that appear on or in the Licensed Software. Trademarks shall be used in accordance with accepted trademark practice, including identification of trademarks owners' names. Trademarks can only be used to identify printed output produced by the Licensed Software and such use of any trademark does not give You any rights of ownership in that trademark. Except as expressly stated herein, this Agreement does not grant You any intellectual property rights in the Licensed Software and all rights not expressly granted herein are reserved by Microvision.

The Licensed Software, including without limitation its structure, organization and code, and its accompanying Documentation are Microvision's or its licensors', as the case may be, confidential information and constitute trade secrets. You will not directly or indirectly, disclose such information except to those of its employees or consultants who require such disclosure in connection with Your use of Flic™ Scanner(s) and who are also subject to the same confidentiality obligations.

LIMITED WARRANTY

Limited Warranty. Microvision warrants that the Licensed Software will perform substantially in accordance with the accompanying materials and online documentation for a period of ninety (90) days from the date of receipt. Any supplements or updates to the Licensed Software provided to You after the expiration of ninety (90) days limited warranty period are not covered by any warranty or condition, express or implied. Microvision and its licensors and suppliers' entire liability and Your exclusive remedy will be, at Microvision's option, (a) return of the price paid (if any) for the Licensed Software, or (b) repair or replacement of the Licensed Software that does not meet this limited warranty and that is returned to Microvision. This Limited Warranty is void if failure of the Licensed Software has resulted from accident, abuse, misapplication, abnormal use or a virus.

DISCLAIMER OF WARRANTIES. THE LIMITED WARRANTY THAT APPEARS ABOVE IS THE ONLY EXPRESS WARRANTY MADE TO YOU AND IS PROVIDED IN LIEU OF ANY OTHER EXPRESS WARRANTIES (IF ANY) CREATED BY ANY DOCUMENTATION OR PACKAGING. EXCEPT FOR THE LIMITED WARRANTY AND TO THE MAXIMUM EXTENT PERMITTED BY APPLICABLE LAW, MICROVISION AND ITS LICENSORS PROVIDE THE LICENSED SOFTWARE AND SUPPORT SERVICES (IF ANY) "AS IS" AND WITH ALL FAULTS, AND HEREBY DISCLAIM ALL OTHER WARRANTIES AND CONDITIONS, EITHER EXPRESS, IMPLIED OR STATUTORY, INCLUDING, BUT NOT LIMITED TO, ANY (IF ANY) IMPLIED WARRANTIES, DUTIES OR CONDITIONS OF MERCHANTABILITY, OF FITNESS FOR A PARTICULAR PURPOSE, OF ACCURACY OR COMPLETENESS OR RESPONSES, OF RESULTS, OF WORKMANLIKE EFFORT, OF LACK OF VIRUSES AND OF LACK OF NEGLIGENCE, ALL WITH REGARD TO THE LICENSED SOFTWARE, AND THE PROVISION OF OR FAILURE TO PROVIDE SUPPORT SERVICES. ALSO, THERE IS NO WARRANTY OR CONDITION OF TITLE, NONINFRINGEMENT, QUIET

ENJOYMENT, QUIET POSSESSION, CORRESPONDENCE TO DESCRIPTION OR NON-INFRINGEMENT WITH REGARD TO THE LICENSED SOFTWARE.

EXCLUSION OF CONSEQUENTIAL AND OTHER DAMAGES. TO THE MAXIMUM EXTENT PERMITTED BY APPLICABLE LAW, NEITHER MICROVISION NOR ITS LICENSORS WILL BE LIABLE FOR ANY SPECIAL, INCIDENTAL, INDIRECT, OR CONSEQUENTIAL DAMAGES WHATSOEVER (INCLUDING, BUT NOT LIMITED TO, DAMAGES FOR LOSS OF PROFITS OR CONFIDENTIAL OR OTHER INFORMATION, FOR BUSINESS INTERRUPTION, FOR PERSONAL INJURY, FOR LOSS OF PRIVACY, FOR FAILURE TO MEET ANY DUTY INCLUDING OF GOOD FAITH OR OF REASONABLE CARE, FOR NEGLIGENCE, AND FOR ANY OTHER PECUNIARY OR OTHER LOSS WHATSOEVER) ARISING OUT OF OR IN ANY WAY RELATED TO YOUR USE OF THE FLIC™ SCANNER(S) OR THE LICENSED SOFTWARE, THE PROVISION OF OR FAILURE TO PROVIDE SUPPORT SERVICES, OR OTHERWISE UNDER OR IN CONNECTION WITH THIS AGREEMENT, INCLUDING AS A RESULT OF A CLAIM OF PATENT, COPYRIGHT OR TRADEMARK INFRINGEMENT, EVEN IN THE EVENT OF THE FAULT, TORT (INCLUDING NEGLIGENCE), STRICT LIABILITY, BREACH OF CONTRACT OR BREACH OF WARRANTY OF MICROVISION OR ANY LICENSOR, AND EVEN IF MICROVISION OR ANY LICENSOR HAS BEEN ADVISED OF THE POSSIBILITY OF SUCH DAMAGES.

LIMITATION OF LIABILITY AND REMEDIES. NOTWITHSTANDING ANY DAMAGES THAT YOU MIGHT INCUR FOR ANY REASON WHATSOEVER (INCLUDING, WITHOUT LIMITATION, ALL DAMAGES REFERENCED ABOVE AND ALL DIRECT OR GENERAL DAMAGES), THE ENTIRE LIABILITY OF MICROVISION AND ANY OF ITS LICENSORS UNDER ANY PROVISION OF THIS AGREEMENT AND YOUR EXCLUSIVE REMEDY FOR ALL OF THE FOREGOING (EXCEPT FOR ANY REMEDY OF REPAIR OR REPLACEMENT ELECTED BY MICROVISION WITH RESPECT TO ANY BREACH OF THE LIMITED WARRANTY) SHALL BE LIMITED TO THE GREATER OF THE AMOUNT ACTUALLY PAID BY YOU FOR THE LICENSED SOFTWARE OR U.S. \$5.00. THE FOREGOING LIMITATIONS, EXCLUSIONS AND DISCLAIMERS (INCLUDING SECTIONS 6, 7, AND 8 ABOVE) SHALL APPLY TO THE MAXIMUM EXTENT PERMITTED BY APPLICABLE LAW, EVEN IF ANY REMEDY FAILS ITS ESSENTIAL PURPOSE.

TERMINATION. If You breach any provision of this Agreement, then Microvision may terminate any license granted hereunder effective immediately without liability after 10 days written notice to You, and You will promptly return to Microvision all copies of the Licensed Software.

ASSIGNMENT AND FLIC™ SCANNER(S) TRANSFER. You may not sublicense or assign this Agreement or any interest or right granted herein without Microvision's prior written consent. The Licensed Software is configured for the sole purpose of operating with the Flic™ Scanner, and accordingly this Agreement shall be automatically assigned on the sale or transfer of the Flic™ Scanner with which the Licensed Software operates to the person or entity who takes title to such Flic™ Scanner, provided that such assignee or transferee abides by the obligations and restrictions set forth in this Agreement.

GOVERNMENT LICENSEE. The Flic™ Scanner and Licensed Software and accompanying documentation were developed at private expense and no part of them is in the public domain. The Licensed Software is "Restricted Computer Software" and "Commercial Computer Software" and if You are acquiring the Licensed Software for the United States Government, then it is acquiring only "restricted rights" in the Licensed Software and its Documentation, all as defined in the applicable provisions of the Department of Defense Federal Acquisition Regulation Supplement and the Federal Acquisition Regulations. Such unit will include a "restricted rights legend" on the Flic™ Scanner and Licensed Software as may be necessary to insure the limitation of rights acquired by the government. Notwithstanding the foregoing, this license will not become effective with respect to the United States Government without Microvision's prior written approval.

EXPORT CONTROLS. This Agreement is subject to the laws, regulations, orders, decrees of the United States which may be imposed from time to time restricting the import/export of the Products to/from the United States. You will not export or re-export the Licensed Software, or any part of the Licensed Software, directly or indirectly, prohibited by or in violation of the laws, rules or regulations of the United States or any applicable jurisdiction. Nor will You export or re-export the Licensed Software, or any part of the Licensed Software, directly or indirectly without first obtaining the required permission to do so from the applicable governmental agencies.

COMPLIANCE WITH LICENSES. If You are a business organization, You agree that upon request from Microvision or Microvision's authorized representative, You will within thirty (30) days fully document and certify in writing that use of any and all Licensed Software at the time of the request is in conformity with Your valid license from Microvision.

MISCELLANEOUS. This Agreement is governed by the laws of the State of Washington. If any term or condition of this Agreement is or will become invalid or unenforceable, then such part will be ineffective to the extent of such invalidity only, without affecting this Agreement's remaining provisions. The third party licensors of any part of Licensed Software are third party beneficiaries hereunder and have the right to enforce the provisions hereof. Sections 3, 5, 6, 7, 8, 9, 12 and 13 will survive cancellation or termination of this Agreement. The remedies at law of either party in the event of default or impending default by the other party in the performance of any terms of this Agreement will not be adequate, and such terms may be specifically enforced by a decree for specific performance, injunction or other appropriate equitable relief. This Agreement is the entire agreement between the parties with respect to the subject matter set forth herein and supersedes all prior oral written agreements between the parties with respect thereto and may only be amended in writing by the parties.